



2024 HANYANG ERICA SUMMER SCHOOL



OFFICE OF INTERNATIONAL AFFAIRS
global.hanyang.ac.kr
ericasummer.hanyang.ac.kr

ERICA



CONTENTS

HANYANG AT A GLANCE	03
OVERVIEW OF HESS	04
WHY CHOOSE HESS?	05
COURSES	06
CALENDAR	07
ACTIVITIES	08
ACCOMMODATIONS	09
PROGRAM FEES	10
HOW TO APPLY	11
CONTACT INFORMATION	12

Hanyang University ERICA

The new standard for Education Research and Industry Collaboration
Hanyang University Education Research Industry Cluster at Ansan



Established
1979



Colleges
9



Departments
47

Graduate Schools
2



Undergraduates
14,347

Graduates
1,970



Int'l Student Body
Approx. **4,500**
annually

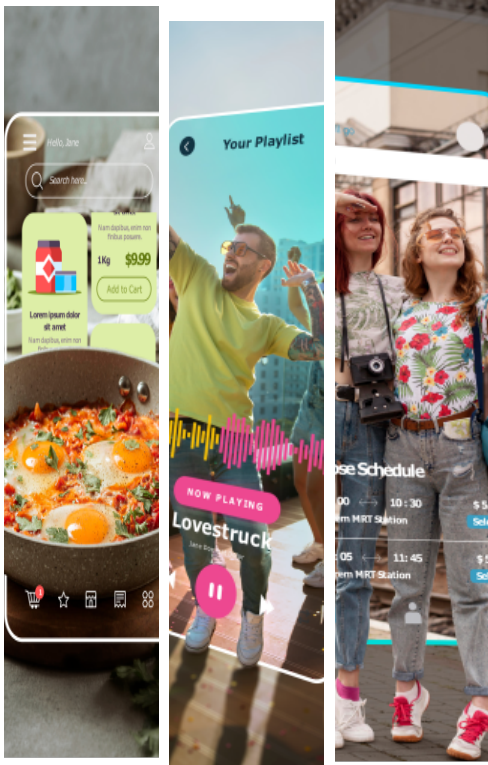


World Univ. Ranking
157th (2023)

Asian Univ. Ranking
24th (2023)

Features

Take classes, earn grades, join field trips, and make new friends in just two weeks!



■ Program Period

- Session 1: July 20(Sat) - August 4(Sun), 2024 (2 weeks)
- Session 2: August 2(Fri) - August 17(Sat), 2024 (2 weeks)

■ Credits

- Enroll in **one session** and earn a maximum of **4 credits** (2 weeks)
- Enroll in **two sessions** and earn a maximum of **8 credits** (4 weeks)

■ Experience Korea

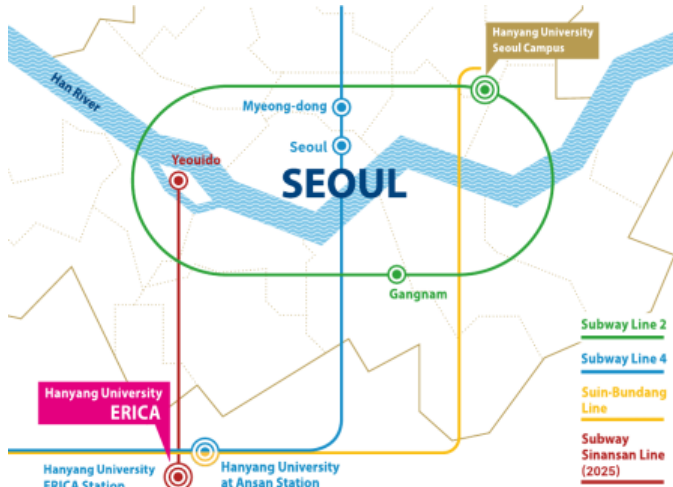
- 2 free activities offered per session

■ Program Fee for Partner University

	One Session (2 weeks)	Two Sessions (4 weeks)
Total Fee	KRW 2,000,000 → KRW 1,500,000 (Approx. USD 1,130)	KRW 3,700,000 → KRW 2,700,000 (Approx. USD 2,030)
Including	Tuition Fee, Free activities, Housing (twin room only)	
NOT Including	Food, Insurance, Flight etc	

Why Choose HESS?

Easy access to Seoul tourist sites




- 55 Hanyangdaehak-ro, Sangnok-gu, Ansan, Gyeonggi-do, 15588, South Korea
- 30km away from Gangnam (40 minutes by bus or subway)
 - 45km away from Myeongdong (60 minutes by bus or subway)
 - Hanyang University ERICA Station (Subway Line No.4) 2025
 - Subway Route Shin Ansan Line is scheduled to open by 2024 (25 minutes from Yeouido to the ERICA Campus)

Easy access to Gyeonggi-do tourist sites







Courses

Below is a tentative list of courses which will be opened in HESS 2024.

Students can **select 1 core course(mandatory)** and **1 elective course(optional)** per session.

1 credit is equivalent to **15 contact hours**.

Field	Core Course (3 credits)	Elective Course (1 credit)
Business	<ul style="list-style-type: none"> Financial Management Consumer Psychology Marketing and Sales in Asia South Korea's Economic Development 	
Engineering	<ul style="list-style-type: none"> Architectural Planning History of Korean Architecture Understanding Artificial Intelligence 	
Cultural Contents	<ul style="list-style-type: none"> Media Industry in Korea Media and Entertainment Business Understanding K-pop Business 	<ul style="list-style-type: none"> K-Beauty and Makeup K-POP Dance K-POP Vocal Taekwondo
Design	<ul style="list-style-type: none"> Illustration and Character Design Future Creative Design Workshop UX Design K-Fashion, Creative Design 	
Korean Studies	<ul style="list-style-type: none"> Korean Language and Culture I Korean Language and Culture II 	

* Courses subject to change

* Opening a new course available with minimum 10 participants

Calendar

Overview of important dates and events for HESS 2024

Session 1 Session 2

SUN	MON	TUE	WED	THU	FRI	SAT
						Jul 20
						Session 1 Check-in
Jul 21	Jul 22	Jul 23	Jul 24	Jul 25	Jul 26	Jul 27
Session 1 Check-in	Orientation CC 1 Welcoming Party	CC 2 EC 1	CC 3 EC 2	CC 4 EC 3	CC 5 EC 4	Activity 1
Jul 28	Jul 29	Jul 30	Jul 31	Aug 1	Aug 2	Aug 3
Free Time	CC 6 EC 5	CC 7	CC 8	CC 9	CC 10 Graduation	Activity 2
					Session 2 Check-in	Activity 1
Aug 4	Aug 5	Aug 6	Aug 7	Aug 8	Aug 9	Aug 10
Session 1 Check-out	Orientation CC 1 Welcoming Party	CC 2 EC 1	CC 3 EC 2	CC 4 EC 3	CC 5 EC 4	Activity 2
Free Time						
Aug 11	Aug 12	Aug 13	Aug 14	Aug 15	Aug 16	Aug 17
Free Time	CC 6 EC 5	CC 7	CC 8	CC 9	CC 10 Graduation	Session 2 Check-out

Session 2
Early
check-in
Available
from
July 27

Session 1
Late
check-out
Available
by
August 10

* CC: Core Course, EC: Elective Course
 * CC Class Time: 09:00 - 12:00 / 13:00 - 14:30 (4.5 hrs/day x 10 times)
 * EC Class Time: 15:00 - 18:00 (3 hrs /day x 5 times)

Activities

Join us and enjoy the summer you will never forget!

Activity 01 K-pop Music Concert



We know you have always wanted to watch K-pop music concert, but did not have the chance. **HESS will bring you to the world of K-pop.** Do not miss the opportunity to feel the vibe at the performance scene!

**Activities subject to change*

Activity 02 Everland & Caribbean Bay



Everland is one of Korea's most visited amusement parks. Signature attractions such as the **T-Express** make Everland a popular destination for a day-trip.

Meanwhile, **Caribbean Bay** just next door is one of Korea's biggest water parks. On a hot summer day, Caribbean Bay is the perfect place to cool off!

Accommodations

Hanyang University ERICA offers on-campus dormitory accommodations for all participants.



- **Stay Period** : 2 weeks per session
- **Price** : Included in program fee (KRW 200,000 for 2 weeks / KRW 400,000 for 4 weeks)
(Approx. USD 150 for 2 weeks / USD 300 for 4 weeks)
- **Room Type** : Twin(2-person) room only (Single room not available)
- **Room Features** : Bathroom, shelved desks with chairs, closet, air-conditioner, single bed, trash bin, cleaning broom, LAN ports and wireless router(WIFI available)
- **Facilities** : Convenience store, stationery store, study room, laundry room, hair salon, fitness center, food court, BHC Fried Chicken, Aunt's Kitchen(small restaurant) etc

* Late check-out available for session 1 participants: Check-out by August 10 with additional KRW 20,000 per stay

* Early check-in available for session 2 participants: Check-in from July 27 with additional KRW 20,000 per stay

* Refund for housing is NOT available

Program Fees

	One Session (2 weeks)	Two Sessions (4 weeks)
Tuition Fee	KRW 1,800,000 Approx. USD 1,350	KRW 3,300,000 Approx. USD 2,480
Activities	Free (2 activities)	Free (4 activities)
Housing	KRW 200,000 Approx. USD 150	KRW 400,000 Approx. USD 300
Total (Non-partner)	KRW 2,000,000 Approx. USD 1,500	KRW 3,700,000 Approx. USD 2,780
Total (Partner)	KRW 1,500,000 Approx. USD 1,130	KRW 2,700,000 Approx. USD 2030

*Exchange Rate: USD 1 = KRW 1,332

Early Bird Promotion - Extra KRW 100,000 Discount

Approx. USD 75



If completing online application by March 10, 2024 and payment by March 20, 2024 (KST)

How to Apply

Details on the application procedure and admission requirements for HESS 2024 are below

1

Visit Website

Go to ericasummer.hanyang.ac.kr and click 'Apply Now.'



4

Complete Payment

Payment instructions will be sent by your email. (Payment is recommended to be done in two weeks)

2

Apply Online

After creating an account, complete online application for HESS 2024.

5

Receive Student ID

After completing payment, you will receive a student ID number which is needed for online course registration.

3

Submit Application

The application period is from Nov. 15, 2023, to May 20, 2024. Do not forget to submit your application within the deadline.

6

Register Courses

Course registration is done online prior to the start of the program. Instructions will be sent to you via email.

Experience KOREA, with HANYANG!

HESS 2024 AWAITS

HANYANG UNIVERSITY ERICA

Office of International Affairs

55 Hanyangdaehak-ro, Sangnok,

Ansan, Gyeonggi-do, 15588, Korea



+82-31-400-4912, 4917, 4927



hess@hanyang.ac.kr



ericasummer.hanyang.ac.kr



[hanyangericasummerschool](https://www.instagram.com/hanyangericasummerschool)

